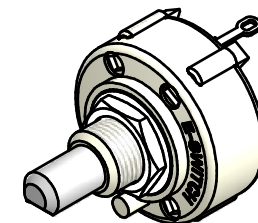
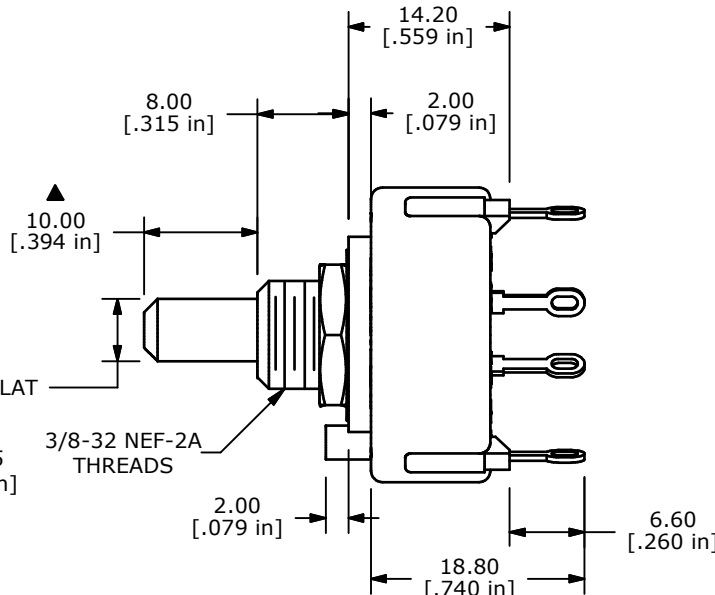
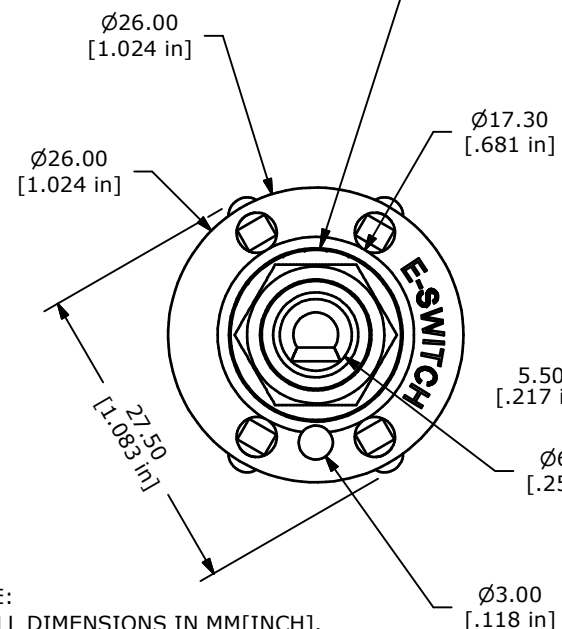


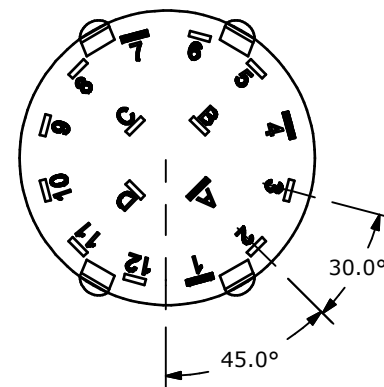


CONTACT CONFIGURATION  
TIMING (BBM) NON-SHORTING

HARDWARE SUPPLIED  
ON SWITCH



ISOMETRIC



NOTE:

1. ALL DIMENSIONS IN MM[INCH].
2. GENERAL TOLERANCE: X.X=±0.4  
X.XX=±0.25
3. TERM. NOS. FOR REFERENCE ONLY.
- ▲4. CONTACT MATERIAL: GOLD
5. CONTACT RATING: 0.3A @ 125VAC
6. OPERATING FORCE 800 ± 300 CM/STANDARD
- ▲7. OPERATING TEMP: -30°C TO 85°C
8. CIRCUIT SP: 3 POSITION 90° INDEX
9. DIELECTRIC STRENGTH: 500VAC-60 SEC.
- ▲10. HARDWARE SUPPLIED ON SWITCH:  
LOCKWASHER, HEXNUT, STOP RING
11. ▲ DENOTES CRITICAL PARAMETER.



TITLE KC56A10.001NLF

A	18587	RELEASED FOR PRODUCTION	8/6/09	BLR
REV	PCR NO	DESCRIPTION	DATE	BY

THE INFORMATION CONTAINED IN THIS DOCUMENT IS PROPRIETARY TO E-SWITCH AND IS NOT TO BE COPIED OR TRANSFERRED

SCALE	DATE	DR	DWG	REV
1.5:1	8/6/2009	BLR	G510365	A